



YOUR
ULTIMATE
DESTINATION

FRP MEMBRANE HOUSINGS
FRP PRESSURE VESSELS
MULTIPORT VALVE
DOSSING PUMP
DISTRIBUTION SYSTEM
JUMBO FILTER HOUSING



JOURNEY BEGINS IN 2012, INDIA'S LEADING FRP VESSELS & MEMBRANE HOUSING MANUFACTURING FACILITY RANGING FROM 8" TO 48" DIA IN FRP PRESSURE VESSELS AND 4" & 8" DIA WITH 300,450, 600,1000,1200 PSI IN MEMBRANE HOUSING.

COMPANY AREA SPREAD ACROSS 60,000 Sqft. WITH

- HIGH FLYING VISION,
 - ZOOMING AHEAD OF COMPETITION,
 - CONSISTENCY IN PRECISION AND ACCURACY,
 - WORKING ON MEGA SCALE,
 - EPITOME OF TECHNICAL EXPERTISE.
-
- 2012 ROLLED OUT OUR FIRST 8" MEMBRANE HOUSING IN GUJARAT, WITH FILAMENT WINDING MACHINE ON AREA 6,000 Sqft AND MONTHLY 600 MTR WINDING CAPACITY.
 - 2015 PURCHASED SECOND FILAMENT WINDING MACHINE AND PRODUCTION GOES TO 1800 MTR MONTHLY. AND SAME YEAR STARTED THE PRODUCTION OF 1000PSI HOUSING.
 - 2017 ENTERED THE WORLD MARKET WITH ITS FIRST 40" HC CONTAINER FULL OF MEMBRANE HOUSING TO EGYPT.
 - AND SAME YEAR WE ARE ENTERED IN FRP VESSELS PRODUCTION WITH ROTO MOLDING AND 4 AXIS FILAMENT WINDING MACHINE WITH 2 SPINDLE FROM 18" TO 36" DIA. WITH EXPANSION OF AREA FROM 6,000 Sqft to 20,000 Sqft. EARLY DAYS CAPACITY OF PRODUCTION IS 30 PC PER DAY, VARY ACCORDING TO SIZES.
 - 2021 PURCHASED 200LTR BLOW MOLDING MACHINE & 4 AXIS FILAMENT WINDING MACHINE WITH 2 SPINDLE, TO FULLFIL THE REQUIMENTS OF OUR CLIENTS WITH RANGE 8" TO 48" DIA FRP VESSELS WITH DAILY 250 VESSELS PRODUCTION CAPACITY PER DAY. WITH EXPANSION OF AREA FROM 20,000 Sqft to 50,000 Sqft.
 - SAME YEAR LAUNCHED 42" & 48" DIA TOP BOTTOM FRP VESSELS. AND GET SUPPORTIVE RESPONSE FROM OUR CLIETS.
 - 2022 ENTERED QATAR & UAE, EXPORTED 9000 FRP VESSELS & MEMBRANE HOUSING.
 - SAME YEAR LAUNCHED 14" & 16" DIA TOP BOTTOM FRP VESSELS.
 - 2023 PURCHASED SECOND 100LTR BLOW MOLDING MACHINE & 4 AXIS FILAMENT WINDING MACHINE WITH 3 SPINDLE, TO ACHIEVE 600 VESSELS PRODUCTION PER DAY. WITH EXPANSION OF AREA FROM 50,000 Sqft to 60,000 Sqft.
 - TRUST AND QUALITY, SETTING BENCHMARK WITH AN INNOVATIVE PRODUCT RANGE.
 - MORE THAN 4,00,000 PCS SALE ROUND THE GLOBE AND COUNTING.
 - WIDEST PRODUCT RANGE FOR RO PLANT IN FRP VESSELS AND MEMBRANE HOUSING.

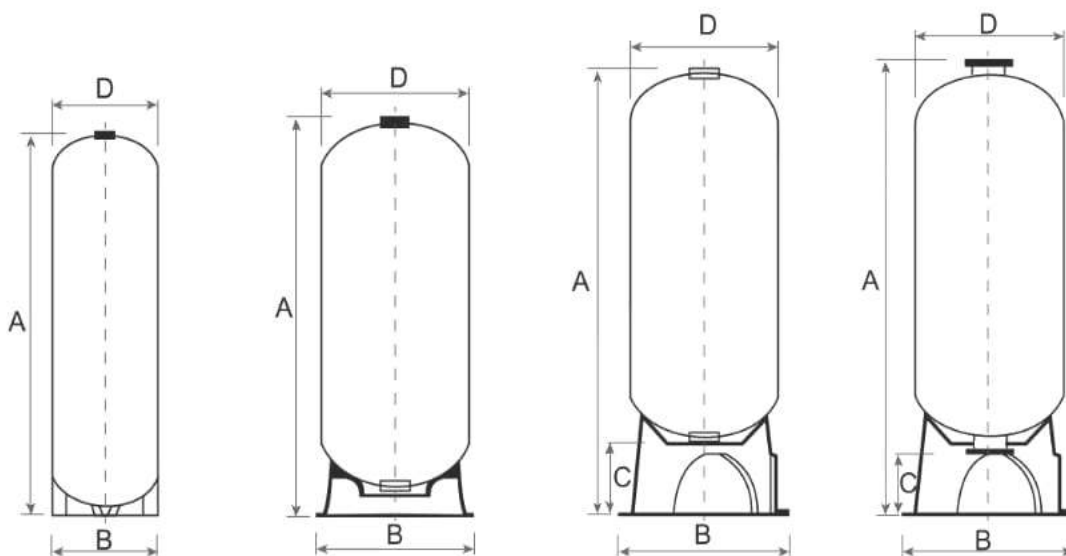
- CAPACITY TO PRODUCE 2800 MTR MEMBRANE HOUSING MONTHLY AND 600 VESSELS PER DAY.
- 11 YEARS OF DISTINCTION.
- HIGH SKILLED TEAM WITH COMPLETE PROFECIENRY.
- EXPORT TO MORE THAN 10 COUNTRIES AND COUNTING.
- ALL MATERIALS WITH DIFFERENT SERIAL NUMBERS ARE CONSIDERED SERIALIZED.

PRODUCT RANGE AND SPECIFICATION :

FRP PRESSURE VESSELS

THE PREMIUM QUALITY FRP PRESSURE VESSELS ARE APPLICABLE FOR PRACTICALLY ANY WATER TREATMENT APPLICATION. THE FRP WINDING PROVIDE STRENGTH TO WITHSTAND PRESSURE UPTO 10 KG/CM2 WITHOUT ANY STRUCTURAL DAMAGE.

- MADE UP OF HIGH PERFORMANCE COMPOSITE MATERIAL WITH FILAMENT WOUND WITH EPOXY RESIN.
- FULL CHOICE OF VESSELS AVAILABLE UP 8" 44" TO 48" 72".
- TOP & BOTTOM OPENING AVAILABLE FOR 14" THROUGH 48" VESSEL.
- MAXIMUM OPERATING PRESSURE 150 PSI (10.5 KGF/CM2).
- MAXIMUM OPERATING TEMPERATURE 120F(49degC).
- 100% CORROSION RESISTANT.
- LOW INSTALLATION AND MAINTENANCE



8" - 16"
2.5" 8-NPSM
4" - 8UN
TOP OPENING
STANDARD BASE

18"
4" - 8UN
TOP OPENING
ROUND BASE

14" - 36"
4" - 8UN
TOP & BOTTOM
TRIPOD BASE

48"
6" FLANGE
TOP & BOTTOM
TRIPOD BASE

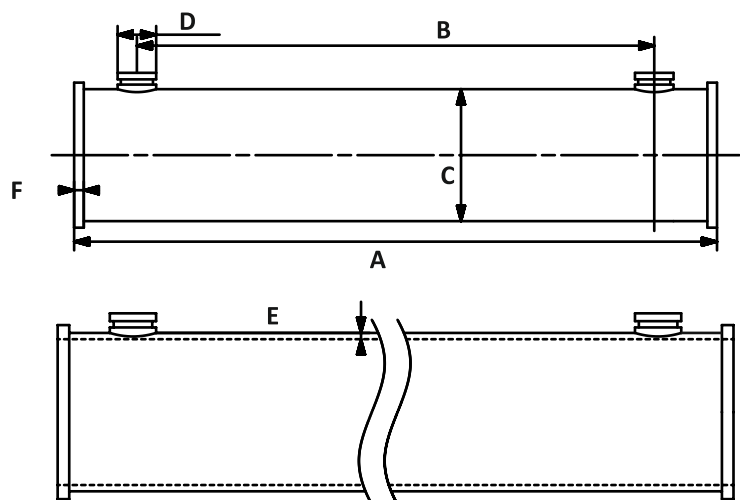
NO	MODEL BASE	OPENING		VOLUME APPROXIMATE		BASE	DIMENSION			
		TOP	BOTTOM	LTR	GALLON		A (MM)	B (MM)	C (MM)	D (MM)
1	844	2.5" 8-NPSM	/	32.6	8.6	STANDARD	1130	217	-	207
2	1054	2.5" 8-NPSM	/	62	16.4	STANDARD	1425	265	-	261
3	1248	2.5" 8-NPSM	/	78	20.6	STANDARD	1225	310	-	306
4	1252	2.5" 8-NPSM	/	84.8	22.4	STANDARD	1325	310	-	306
5	1354	2.5" 8-NPSM	/	104	27.5	STANDARD	1415	344	-	340
6	1465	2.5" 8-NPSM	/	154	40.6	STANDARD	1705	370	-	365
7	1465	4" - 8UN	/	154	40.6	STANDARD	1700	370	-	365
8	1465	4" - 8UN	4" - 8UN	154	40.6	TRIPOD	1915	380	240	365
9	1665	4" - 8UN	/	189	49.9	STANDARD	1715	415	-	410
10	1665	4" - 8UN	4" - 8UN	189	49.9	TRIPOD	1910	380	252	410
11	1865	4" - 8UN	/	268	70.7	STANDARD	1720	455	-	455
12	1865	4" - 8UN	4" - 8UN	268	70.7	TRIPOD	1905	510	242	455
13	2162	4" - 8UN	4" - 8UN	341	90.08	TRIPOD	1908	565	308	546
14	2472	4" - 8UN	4" - 8UN	490	129.4	TRIPOD	2226	636	356	628
15	3072	4" - 8UN	4" - 8UN	735	194.1	TRIPOD	2210	790	620	770
16	3672	4" - 8UN	4" - 8UN	1050	277.3	TRIPOD	2280	975	510	918
17	4272	6" FLANGE	6" FLANGE	1432	378.1	TRIPOD	2465	1100	400	1080
18	4872	6" FLANGE	6" FLANGE	1830	483.4	TRIPOD	2485	1225	370	1240



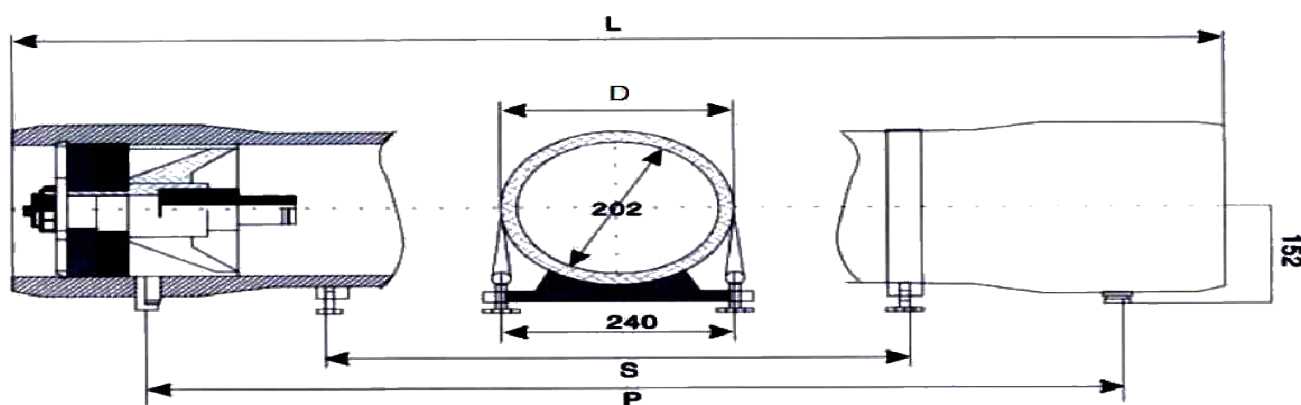
FRP 8OS MEMBRANE HOUSINGS

FEATURES :

- Mirror finish ID for easy and quick loading and unloading of membranes.
- Quick lock head retention system for quick access to membranes.
- Exteriors coated with high gloss polyurethane paint for UV resistance.
- Compact design for use in compact and low energy water treatment unit.
- More accurate head seal area is formed by mandrel surface.
- Operating Temp Range : -10°C ---49°C.
- Feed / Concentrate port 1-1/2" coupling, Permeate port 1" thread.
- Standard : 1.5x Design Pressure.
- Operating pH Range : 3 – 11
- Cleaning pH Range : 2 – 12 (less than 30 minutes)



8 Inch membrane housing 300 PSI & 450 PSI



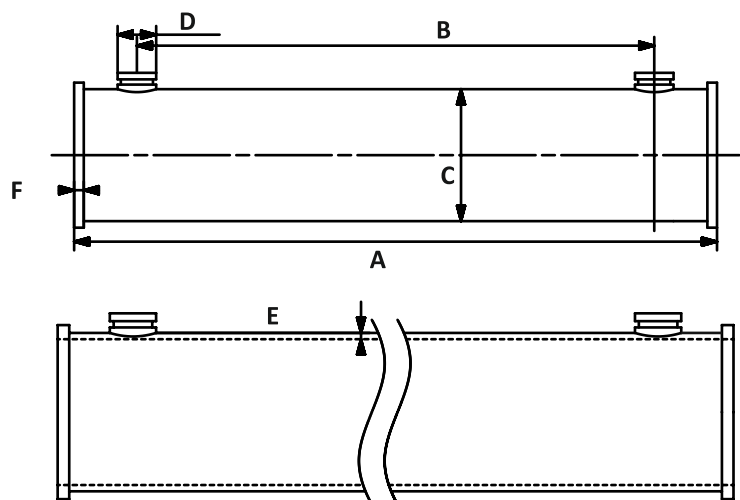
8 Inch membrane housing drawing - Side Port

SR	8040 SP	8080 SP	80120 SP	80160 SP	80200 SP	80240 SP
A	1520	2536	3556	4566	5586	6601
B	1200	2216	3236	4246	5266	6281
C	202	202	202	202	202	202
D	50.8	50.8	50.8	50.8	50.8	50.8
E	4.5	4.5	4.5	4.5	4.5	4.5
F	19+	19+	19+	19+	19+	19+

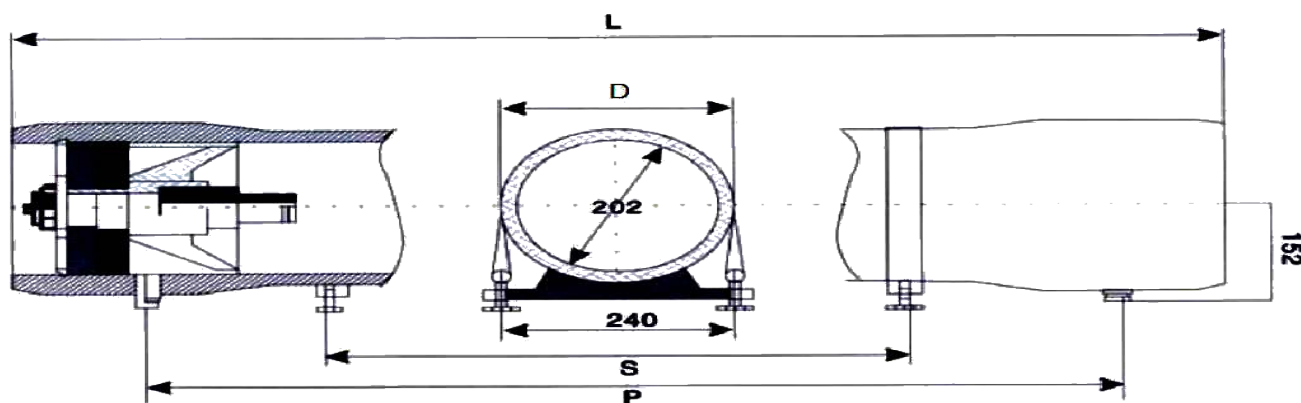
FRP 8OE MEMBRANE HOUSINGS

FEATURES:

- Mirror finish ID for easy and quick loading and unloading of membranes.
- Quick lock head retention system for quick access to membranes.
- Exteriors coated with high gloss polyurethane paint for UV resistance.
- Compact design for use in compact and low energy water treatment unit.
- More accurate head seal area is formed by mandrel surface.
- Operating Temp Range : -10°C ---49°C.
- Feed / Concentrate port 1-1/2" coupling, Permeate port 1" thread.
- Standard : 1.5x Design Pressure.
- Operating pH Range : 3 – 11
- Cleaning pH Range : 2 – 12 (less than 30 minutes)

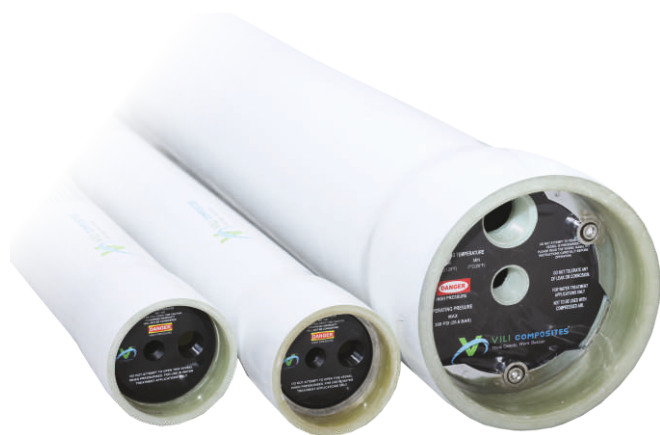


8 Inch membrane housing 300 PSI & 450 PSI



8 Inch membrane housing drawing - Side Port

MODEL	DESIGN PRESSURE	PORT	ELEMENT
EP8040E300 - (1-6)	300 PSI	END	1-6
EP8040E450 - (1-6)	450 PSI	END	1-6
EP8040E600 - (1-6)	600 PSI	END	1-6
EP8040E1000 - (1-6)	1000 PSI	END	1-6



8-E Membrane Housing



8-S Membrane Housing

Specifications	Port	Operating Pressure 300 PSI	Operating Pressure 450 PSI	Operating Pressure 600 PSI	Operating Pressure 900 PSI	Operating Pressure 1000 PSI	Operating Pressure 1200 PSI
8" - 1E	END	EP81E300	EP81E450	EP81E600	EP81E900	EP81E1000	EP81E1200
8" - 1E	SIDE	SP81E300	SP81E450	SP81E600	SP81E900	SP81E1000	SP81E1200
8" - 2E	END	EP82E300	EP82E450	EP82E600	EP82E900	EP82E1000	EP82E1200
8" - 2E	SIDE	SP82E300	SP82E450	SP82E600	SP82E900	SP82E1000	SP82E1200
8" - 3E	END	EP83E300	EP83E450	EP83E600	EP83E900	EP83E1000	EP83E1200
8" - 3E	SIDE	SP83E300	SP83E450	SP83E600	SP83E900	SP83E1000	SP83E1200
8" - 4E	END	EP84E300	EP84E450	EP84E600	EP84E900	EP84E1000	EP84E1200
8" - 4E	SIDE	SP84E300	SP84E450	SP84E600	SP84E900	SP84E1000	SP84E1200
8" - 5E	END	EP85E300	EP85E450	EP85E600	EP85E900	EP85E1000	EP85E1200
8" - 5E	SIDE	SP85E300	SP85E450	SP85E600	SP85E900	SP85E1000	SP85E1200
8" - 6E	END	EP86E300	EP86E450	EP86E600	EP86E900	EP86E1000	EP86E1200
8" - 6E	SIDE	SP86E300	SP86E450	SP86E600	SP86E900	SP86E1000	SP86E1200
4" - 1E	END	EP41E300	EP41E450	EP41E600	EP41E900	EP41E1000	EP41E1200
4" - 2E	END	EP42E300	EP42E450	EP42E600	EP42E900	EP42E1000	EP42E1200
4" - 3E	END	EP43E300	EP43E450	EP43E600	EP43E900	EP43E1000	EP43E1200
4" - 4E	END	EP44E300	EP44E450	EP44E600	EP44E900	EP44E1000	EP44E1200

Dossing Pump



The Vilom are reciprocating chemical injection pumps engineered for precise dosing. They produce controlled flows up to 400 LPH at pressures up to 5 kg/cm² (model dependent). A mechanical diaphragm and an adjustable stroke mechanism are the core features of these pumps, which are built for industrial applications. They offer high performance, with an accuracy of $\pm 2\%$ of the full flow range. The unit's two primary sections are the drive assembly and the liquid end. The pump's output flow is a direct result of the drive's stroke rate, the liquid end's volume, and the stroke length, which users can easily adjust during operation via the stroke Controller.

Air Release Valve



Distribution System



FILTER HOUSING



20"
Big Blue

Filter Cartridge Housings: This is the most direct name for the component you've described. It holds a filter cartridge and is made of materials like polypropylene. **Industrial Water Filter Housings:** If the application is water filtration, this term is more specific. **Filter Housings:** Given the "polypropylene" and "stainless steel" materials, this could be for use in chemical dosing systems where corrosion resistance is important. **High-Flow Filter Vessels:** This term is used for larger versions of these housings, particularly those with a 4.5" diameter, which are often classified as "big blue" or "jumbo" housings.



These housing are made up using high quality virgin polypropylene for durable and leak proof construction. As these have thick walls therefore can withstand high pressure and have longer life with sleek design and easy maintenance these housing ensures comfortable change of cartridge and makes it most suitable for use in RO System, UV Sterilizers, Carbon filters and other water treatment technologies. "O"-ring/Gasket Silicon, FKM, Buna-N, EPDM Suitable cartridge With a wide range of connection sizes these are suitable for various requirements.

MULTIPORT VALVE



25/40/50zNB MULTIPORT VALVES TECHNICAL SPECIFICATIONS

Material of Construction	ABS
Maximum Flow Rate	2000 to 14000lph @ 0.5 Kg/cm ² pressure drop
Valve Connection to Vessel	2 1/2" NPT(M) or 4"NPT(M) Adaptors Provided
Riser Pipe Size	32mm OD PVC pipe
Inlet, Outlet, Drain Connections	1" to 2 1/2" BSP(F)
Regenerant Suction Tubing	1/2"
Ejector Type	1/2" BSP (F)
Injector Ratio	1:1
Injector Suction Rate	1000 lph @ 3 kg/cm ²
Testing Pressure	5 Kg/cm ²
Minimum Pressure for Uniform Suction	3 Kg/cm ²
Accessories	Top and bottom disc type strainer, Suction tubing and foot valve for softeners only

AVAILABLE IN:

Front facing type filters and softeners Side mount/Centre Mounted filter and softener
New Generation with inlet and outlet in the same line for filters and softeners



ADAPTOR



These housing are made up using high quality virgin polypropylene for durable and leak proof construction. As these have thick walls therefore can withstand high pressure and have longer life with sleek design and easy maintenance these housing ensures comfortable change of cartridge and makes it most suitable for use in RO System, UV Sterilizers, Carbon filters and other water treatment technologies. "O"-ring/Gasket Silicon, FKM, Buna-N, EPDM Suitable cartridge With a wide range of connection sizes these are suitable for various requirements.



**"We treat water
with care,
because we
care"**



Sole Distributor for East Africa

Kanku Kenya Ltd.

Godown No 15, Alpha Centre
Mombasa Road, Nairobi, Kenya

Call: +254782977777

E-mail : admin@kanku.co.ke

Web.: www.vilicompositesindia.com